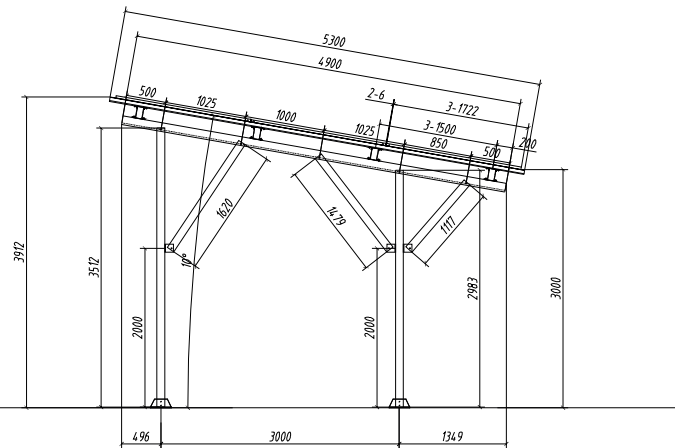
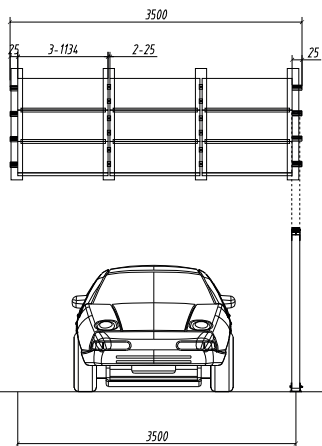




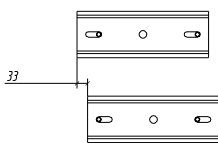


PROPRIETARY AND CONFIDENTIAL. THE INFORMATION CONTAINED IN THIS DRAWING IS THE SOLE PROPERTY OF NANOSUN SRO. ANY REPRODUCTION IN PART OR AS A WHOLE WITHOUT THE PERMISSION FROM NANOSUN IS PROHIBITED.

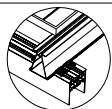
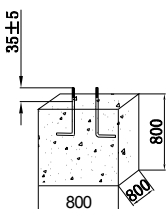
Rev	DSN	Version	Detail	Name	Date
3					
4					
5					



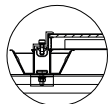
G



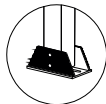
Left-right Forward-backward  
Base adjustment



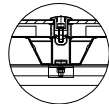
Rail Clamp



End Clamp

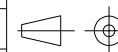


Concrete Foundation



Mid Clamp

Project Info	Czech-NNS-CommercialCarports-200h	
Racking Type		
Panel Size	1722x1134x30	
Wind Speed	35m/s	Snow Load 2KPa
Design	Rima	Surface Roughness B
Confirm	Abel	3x3
Approval	Abel	



Standard	bs EN	Version	v2.0
Material	6005-T6+SUS304		
Page	2/2	Date	2022.11.16

4

3

2

1